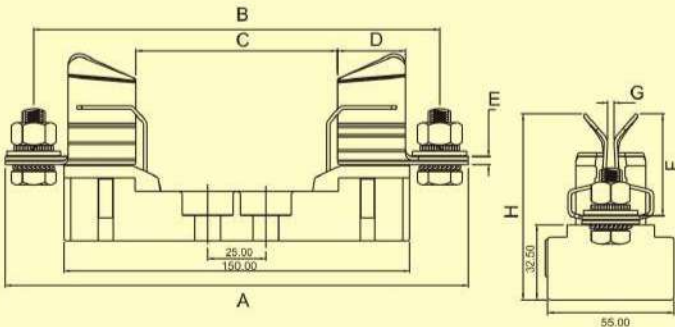
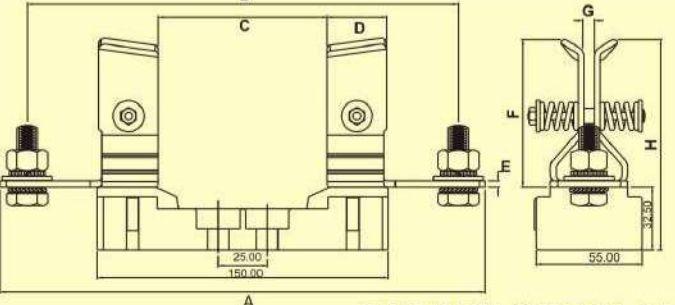


H.R.C. FUSE FITTINGS & FUSE BASES



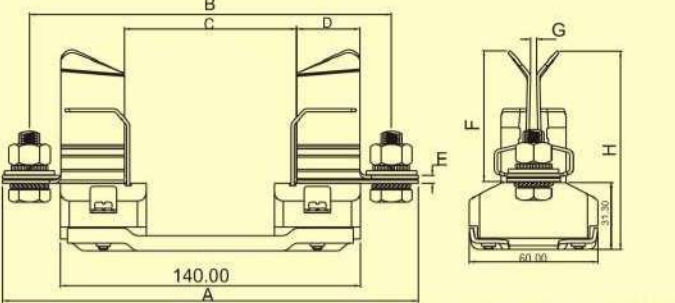
DIMENSIONAL TABLE FOR FUSE BASE 250 / 400Amps.								
RATINGS	DIMENSIONS IN mm.							
	A	B	C	D	E	F	G	H
250Amps.	201.00	176.00	085.00	030.00	003.50	046.00	005.50	080.50
400Amps.	224.00	201.00	085.00	035.50	004.00	061.00	005.50	095.00

FUSE BASE CIRCLIP TYPE 250 / 400 Amps.



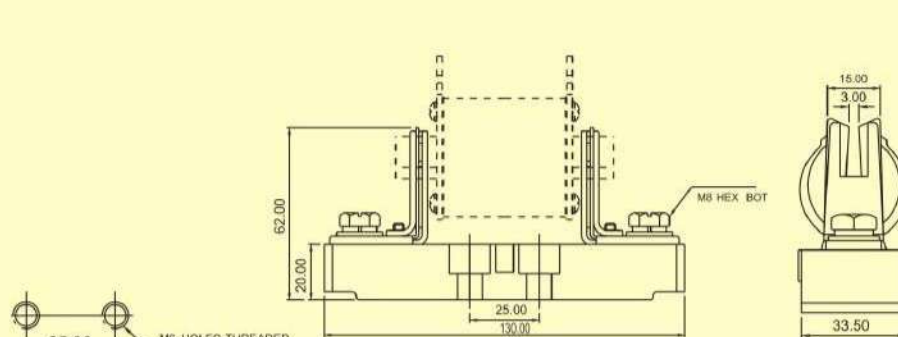
DIMENSIONAL TABLE FOR FUSE BASE (SPRING LOADED) 250 / 400 / 630 Amps.								
RATINGS	DIMENSIONS IN mm.							
	A	B	C	D	E	F	G	H
250Amps.	250.00	222.00	088.00	030.50	002.00	075.00	005.50	108.50
400Amps.	250.00	222.00	085.00	030.80	002.50	075.00	005.50	108.50
630Amps.	250.00	222.00	087.00	030.80	003.50	076.00	005.50	109.00

FUSE BASE (SPRING LOADED) 250 / 400 / 630 Amps.



DIMENSIONAL TABLE FOR METAL BASE PLATE (FUSE BASES) 250 / 400 / 630 Amps.								
RATINGS	DIMENSIONS IN mm.							
	A	B	C	D	E	F	G	H
250Amps.	190.00	195.00	082.00	030.00	003.00	047.50	005.50	078.50
400Amps.	222.00	195.00	082.00	035.80	003.50	061.00	005.50	092.50
630Amps.	240.00	208.00	082.00	031.00	003.50	075.00	005.50	106.50

FUSE BASE, METAL BASE PLATE 250/400/ 630 AMPS.



DRILLING PLAN FOR FUSE 100 Amp.

OPEN TYPE FUSE BASE SFB-00



GSTIN No. 09AAECS4924J1Z2

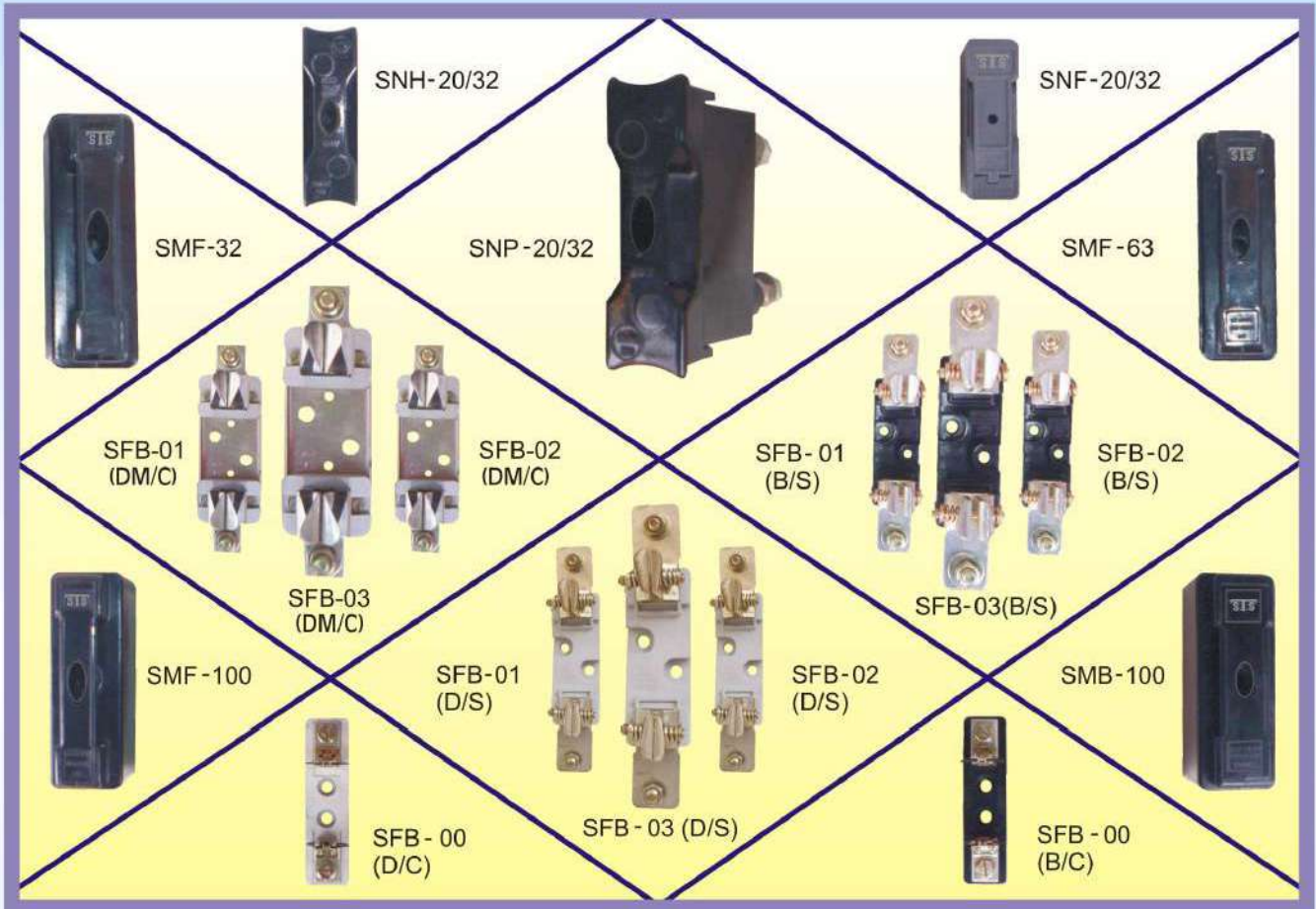


SHRI TULSI SWITCHGEAR PVT. LTD.
D-176, Sector-10, Noida Distt. Gautambudh Nagar-201301 (U.P.)
Mob.: 09911192507, 09811192507
Mail: snahata_stsnoida@yahoo.com



[SINCE-1989]

H.R.C. FUSE FITTINGS & FUSE BASES



STS make moulded fuse fittings are available in very wide range i.e 20Amp., 32 Amp., 63 Amp. and 100 Amp. The fittings are moulded close type and safe clip type. Open type fuse bases are suitable from size 00 to size 03 in high grade **PHENOLIC COMPOUND** as well as in **DOUGH MOULDING COMPOUND**. They are suitable for front wiring and both end but back connected type SNP available in 20 Amp. only. Type SNF 20/32 Amp. is design to accumulated with both bolted panel and direct 35 mm DIN rail mounting features.

RANGE :-

STS fuse fittings & fuse base range is broadly divided in three groups :

- | | |
|----------------|---|
| Group A | 20 Amp. to 100 Amp. moulded fuse fittings comprising of moulded fuse bases & carriers. |
| Group B | 20/32 Amp. safe clip type moulded fuse base & fuse carriers |
| Group C | (Open type from size 00 to 03) 100 Amp. to 630 Amp. open type moulded fuse bases in BAKELITE & DOUGH MOULDING COMPOUND |



H.R.C. FUSE FITTINGS & FUSE BASES

Group A :-

Close type fuse fittings are suitable for off-set tag fuses. 20/32 Amp. fuse fittings are available with front/ busbar and rear connection arrangement while 32 Amp., 63 Amp. & 100 Amp. rating are suitable for front & busbar connections. Ample contact area with non ferrous high pressure backing plates ensure low temperature rise. A minimum number of component have been used thus insuring simplicity of design and reliability in operation. Moulded components are manufactured from electrical grade of phenolic powder. An aperture has been provided on the top of the carrier for the quick indication of fuse operation without removing the carrier.

Group B :-

SNF 20/32 Amp. safe clip type fuse fitting is designed to accommodate with both bolted panel and a direct 35 mm DIN RAIL mounting. The product is suitable to the compact range of off-set type blade tag fuse link. The product is very significant in saving of time and power loss. Easy removable of fuse carrier from the fuse base is possible with the help of a cam lock arrangement. Fabulous and unique looking carrier having cam locking arrangement without carrier contact provides very low wattage loss due to low contact resistance between the fuse link and base contact.

Group C :-

Open Type Fuse bases are available in 100 Amp, 250 Amp, 400 Amp & 630 Amp in this range. The moulded components are manufactured in PHENOLIC COMPOUND as well as in DOUGH MOULDED COMPOUND. Contacts are silver plated thus keep the contact resistance to the minimum. Lyre shape contact and spring loaded contact generate on the fuse blades resulting in very low temperature rise.

Silent Features :-

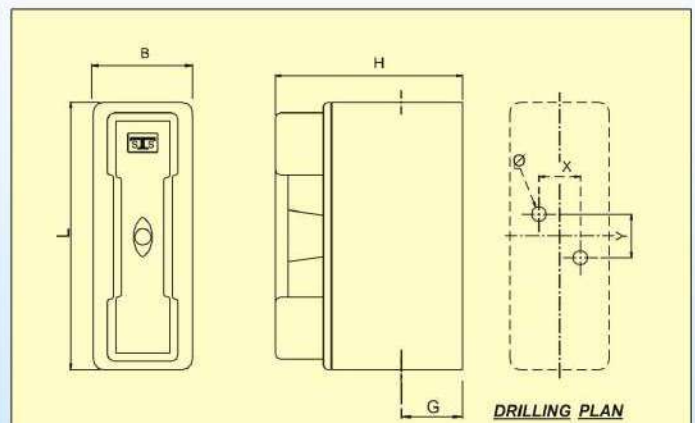
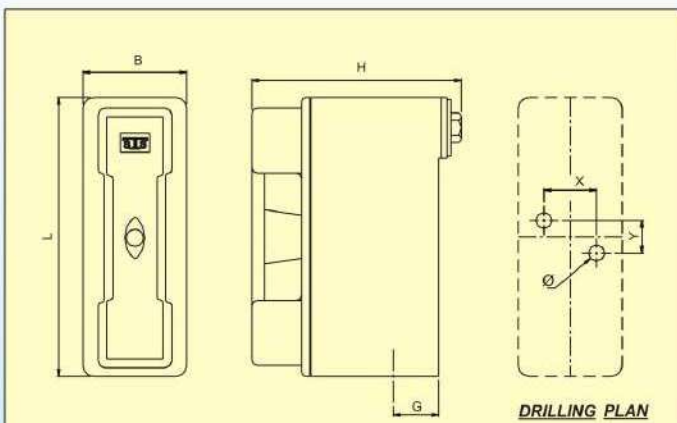
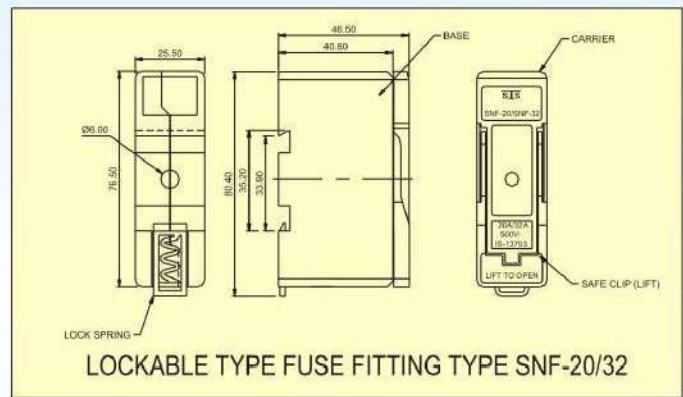
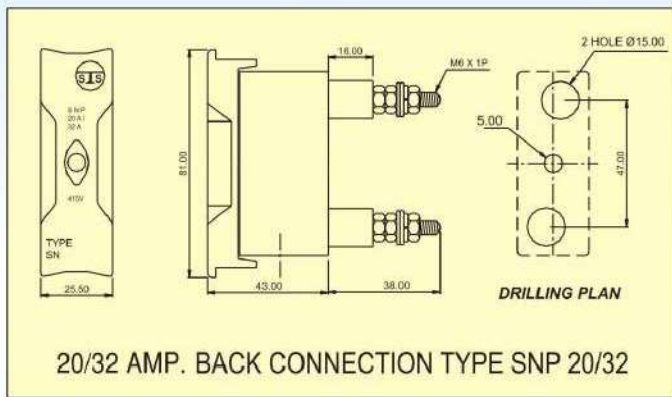
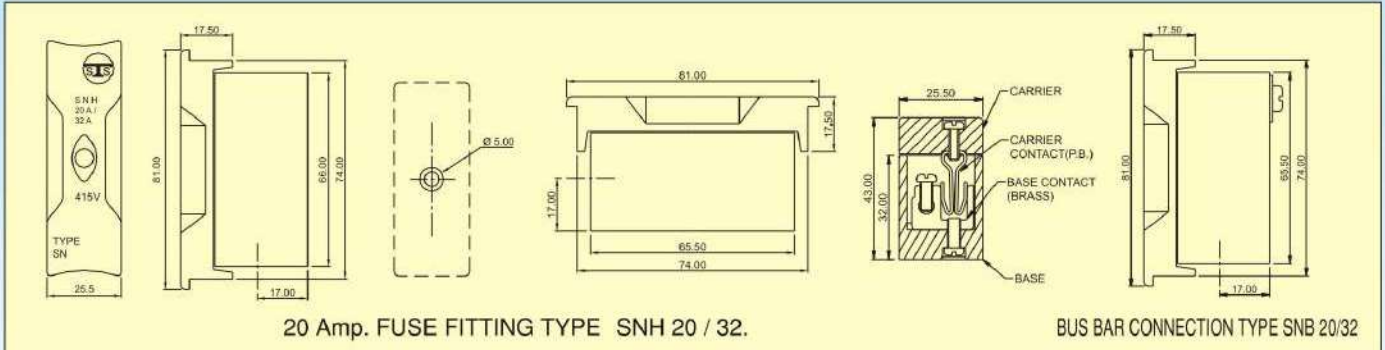
1. Available in front, Busbar and back connection
2. Safe clip type fuse fitting, SNF 20/32 available in GFFR material
3. Die electric strength and insulation resistance tested to the relevant IS: 13703 Part 1, 2 Sec-2, 1993
4. Open type fuse bases are suitable for blade type contact with the circlip loaded and the spring loaded
5. Phosphor bronze contacts(Close type) ensure absolute contact pressure with the made from brass
6. Single piece brass contact with adequate hole appropriate cable entry.
7. Easy removable carrier from the fuse base is possible with the help of cam locking arrangement.
8. Material used in fuse fitting housing is GFFR thus insuring the best mechanical, electrical and thermal characteristics.
9. Dual mounting capability is available.
10. Easy and safe installation.
11. Easy removable of carrier.

Technical Details :-

Rated Voltage	500V AC/DC
Rated Current	20/32 Amp, 32 AMPS, 63 AMPS, 100 AMPS (Close type) 100 AMPS, 250 AMPS, 400 AMPS, 630 AMPS (Open type)
Temperature Range	-20°C to +65°C
Type of Connection	Front Connection, Bus bar connection, Rear connection
Mounting	Bolted Panel & 35 mm Din Rail
ISS Reference	13703 Pt-1, 2 Sec-2, 1993
Housing Material	Non Flammable, Hygroscopic & unbreakable GFFR
Insulation resistance	More Than 100 Mohms
Dielectric Strength	2.5 K.V., 50 Hz for 1 minute between live parts and housing



H.R.C. FUSE FITTINGS & FUSE BASES



DIMENSIONAL TABLE FOR BUS BAR TYPE CONNECTION							
RATINGS	DIMENSIONS IN mm.						
	L	B	H	G	X	Y	∅
100Amps.	130.00	048.20	100.00	029.50	019.80	021.80	007.00
063Amps.	105.00	035.50	078.50	022.50	013.20	006.80	006.00
032Amps.	099.00	033.00	076.00	023.50	013.00	006.80	006.00

DIMENSIONAL TABLE FOR FRONT CONNECTION							
RATINGS	DIMENSIONS IN mm.						
	L	B	H	G	X	Y	∅
100Amps.	130.00	048.20	091.50	029.50	019.80	021.80	007.00
063Amps.	105.00	035.50	069.00	020.50	013.20	006.80	006.00
032Amps.	099.00	033.00	070.00	023.50	013.00	006.80	006.00



SNF LKBL TYPE H.R.C. FUSE FITTING UPTO 32A 550V AC/DC



DESIGN DESCRIPTION:-

STS Lockable H.R.C. Fuse fitting series SNF-20/32 Amps is designed to accommodate with both bolted panel and a direct 35mm DIN rail mounting features. The product is suitable to the compact range of offset blade tag fuse links. The combination offers significant saving in time and power loss as well as reduction in cost. Fuse holders are perfectly designed to the requirements of national and international standards ISS-9224-1979; ISS-13703-1993.

FEATURES:-

- CARRIER WITH CAM LOCKING ARRANGEMENT:-** Fabulous and unique locking carrier having cam locking arrangement without carrier contact provides the low wattage loss due to low contact resistance between the fuse link and base contact. An improved contact pressure develops between link blade and base contact through cam locking arrangement.
- EASY REMOVAL OF THE CARRIER:-** Easy removal of fuse carrier from the fuse base is possible with the help of cam lock arrangement.
- HIGH QUALITY BASE MATERIAL:-** Material used in the fuse base housing is GLASS FILLED NYLON which contains the best mechanical, thermal and electrical characteristics by which the fuse base holds non flammable, nonhygroscopic, and unbreakable.
- EASY & SAFE INSTALLATION**
Installation on the DIN Rail is simply a snap action. So the fitting and removal of the fuse holder on the panel is very easy and time saving.
- DUAL MOUNTING CAPABILITY:-** The standard design of SNF-20/32 is suitable to be mounted on bolted panel and as a direct 35mm DIN rail mounting arrangement.



SHRITULSI SWITCHGEAR PVT. LTD.-NOIDA (INDIA)

APPLICATION :- STS SNF 20/32 Fuse Fitting along with fuse links provides safe and easy method of protecting a wide range of electrical equipment such as Lighting, Heating, control and motor equipment etc. H. R. C. Fuse can be installed on DIN rails by a simple & easy snap action similarly for removal a simple operation by a screw driver is enough.

Selection Table

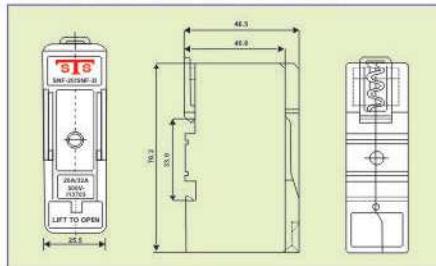
FUSE HOLDER TYPE	CURRENT RATING AMP	MAX. VOLTS AC/DC	FUSE LINKS TYPE
SNF 20/32	20	550	NS TYPE 2 Amps NS TYPE 4 Amps NS TYPE 6 Amps NS TYPE 10 Amps NS TYPE 16 Amps NS TYPE 20 Amps
SNF 20/32	32	550	NS TYPE 25 Amps NS TYPE 32 Amps

Technical Details :

Rated voltage	500 V Ac/Dc
Rated Current	20/32 Amp.
Temperature Range	-20°C to +65°C
Type of Connection	Front Connection
Mounting	Bolted Panel & 35 mm Din Rail
ISS Reference	13703 Pt-1 Sec-2, 1993
Housing Material	Non Flammable, Hygroscopic & unbreakable
Insulation resistance	More Than 100 Mohms
Dielectric Strength	2.5 K.V., 50 Hz for 1 minute between live parts and housing

Rating Amps.	TYPE	Max. Cable(A1)mm ²	Fuse Link type	Dimensions
20	SNF20/32	4	As per IS 13703 (NS Type)	As per drawing
32	SNF20/32	10	As per IS 13703 (NS Type)	As per drawing

Dimensional Detail : DIMENSIONS (mm)



Authorised Dealer :